

Applied Physics at UBC

Chris Waltham

- Structured surface physics
 - PI: Lorne Whitehead
- Musical acoustics
 - PI: Chris Waltham

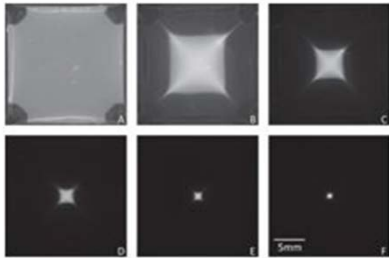
Structured Surface Physics Laboratory



Bringing natural light into the core of office buildings using mirror arrays and light pipes.



Brighter more efficient television, laptop screens – high dynamic range display



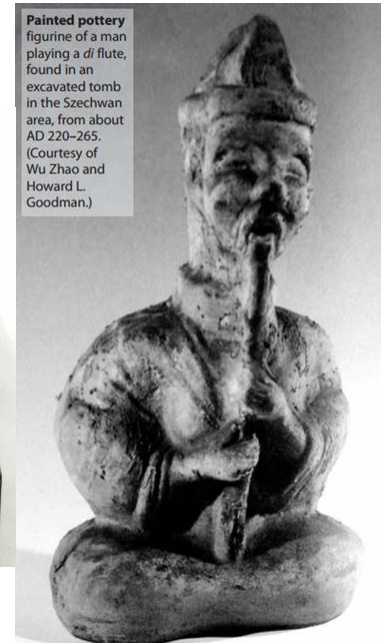
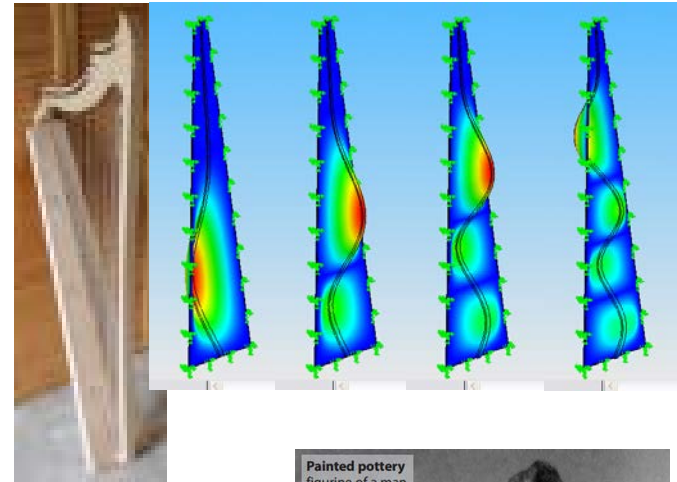
DNA concentration and purification



Improved magnetic levitation

Musical Acoustics at UBC

- Soundboxes of string instruments
 - West
 - harp, **violin**, **viola**, guitar
 - East
 - yueqin, pi'pa, guzheng, **guqin**
- Wind instruments
 - **Xiao** (Yang Lan)



Painted pottery figurine of a man playing a *di* flute, found in an excavated tomb in the Szechwan area, from about AD 220–265. (Courtesy of Wu Zhao and Howard L. Goodman.)



Universität Hamburg



宁波大学

NINGBO UNIVERSITY



UBC Chinese Orchestra



Facilities

- Large anechoic chamber
- FEA vibration simulations
- Modal analysis
- Acoustic Imaging
- Lutherie

